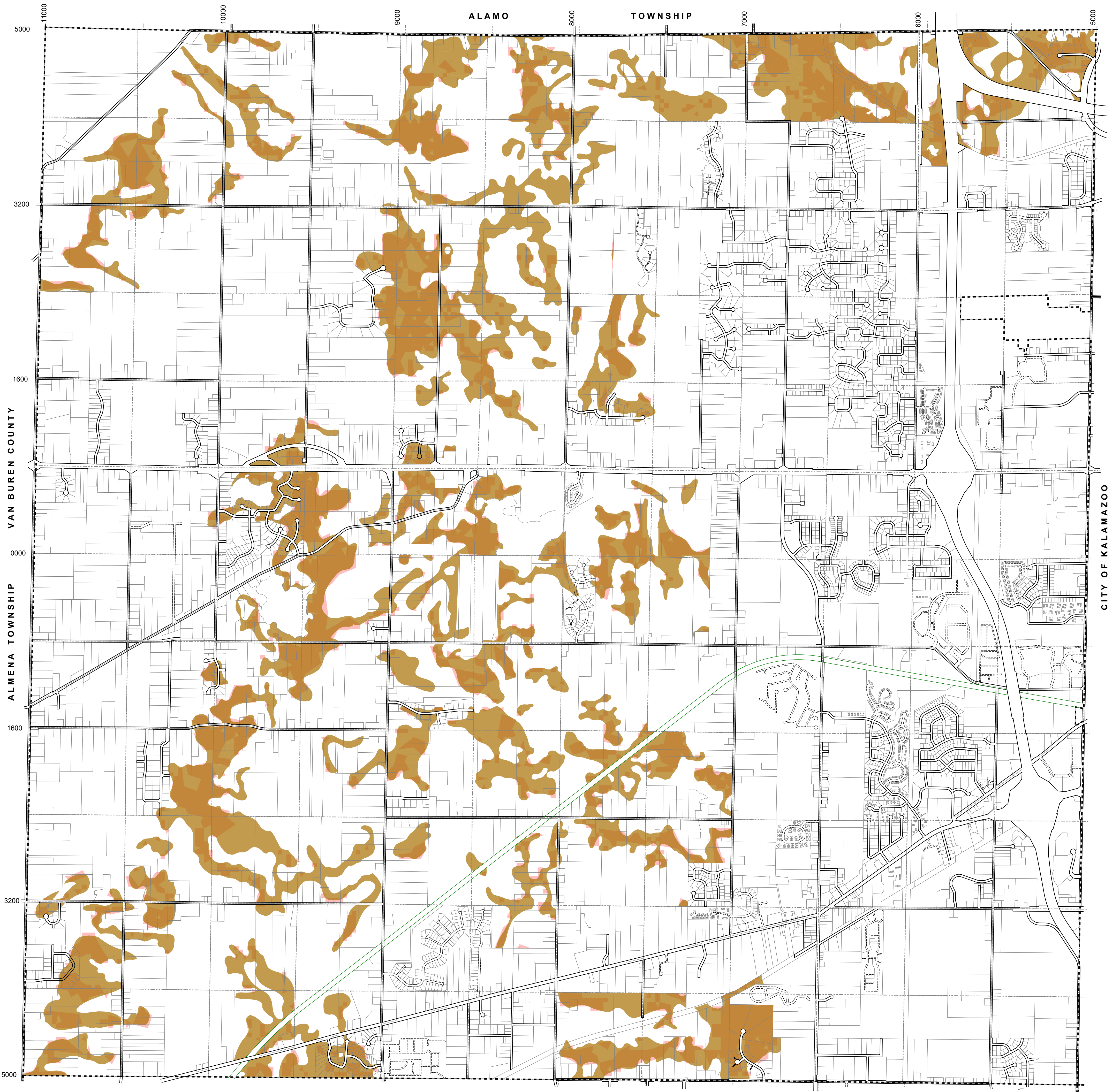


Charter Township of Oshtemo

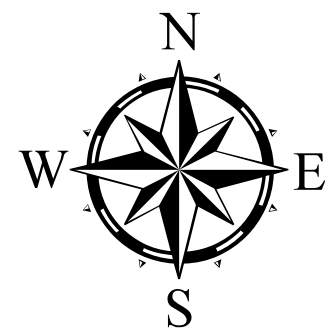
Kalamazoo County, Michigan

Natural Features Protection District - Slopes & Hills



LEGEND

- Rolling Hills Visible from Roadway
- 12%+ Slope per Classification
- Both



1,500 750 0 1,500 Ft

Scale: 1" = 1,500'

- Public ROW
- Private ROW
- Railroad ROW

Printed: November 2023